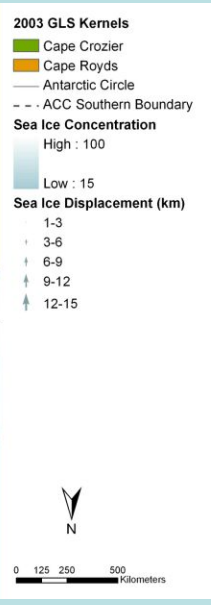
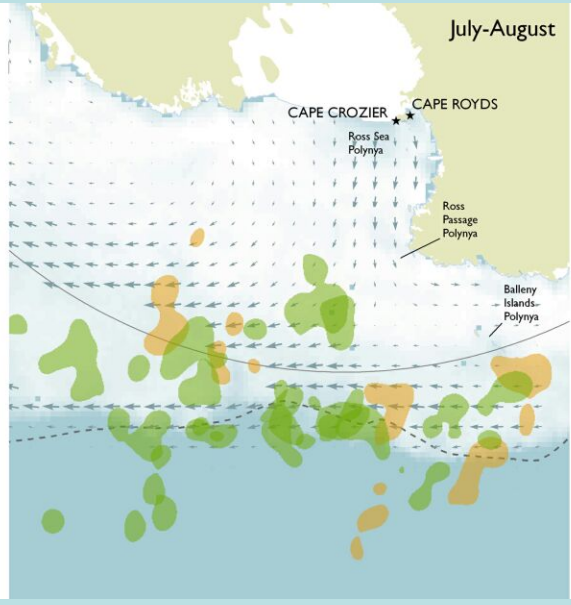
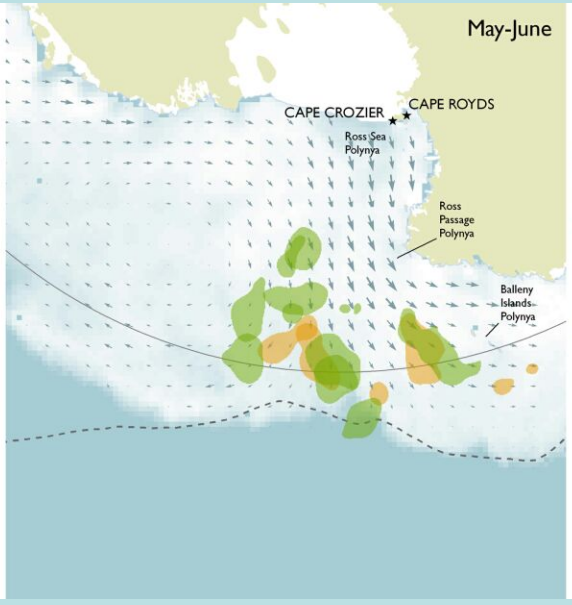
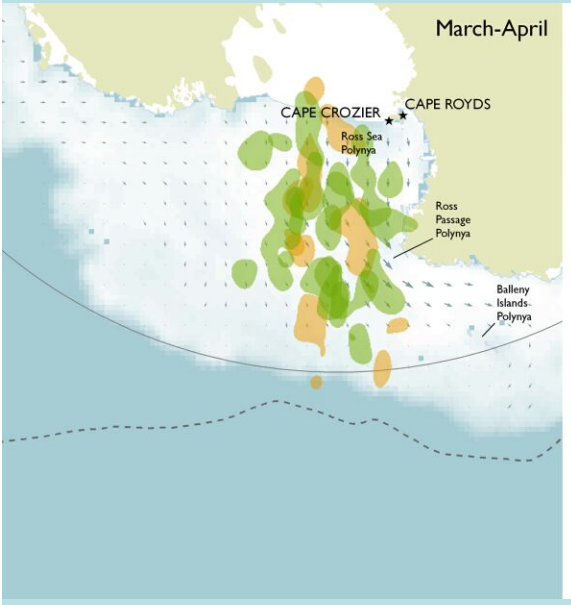
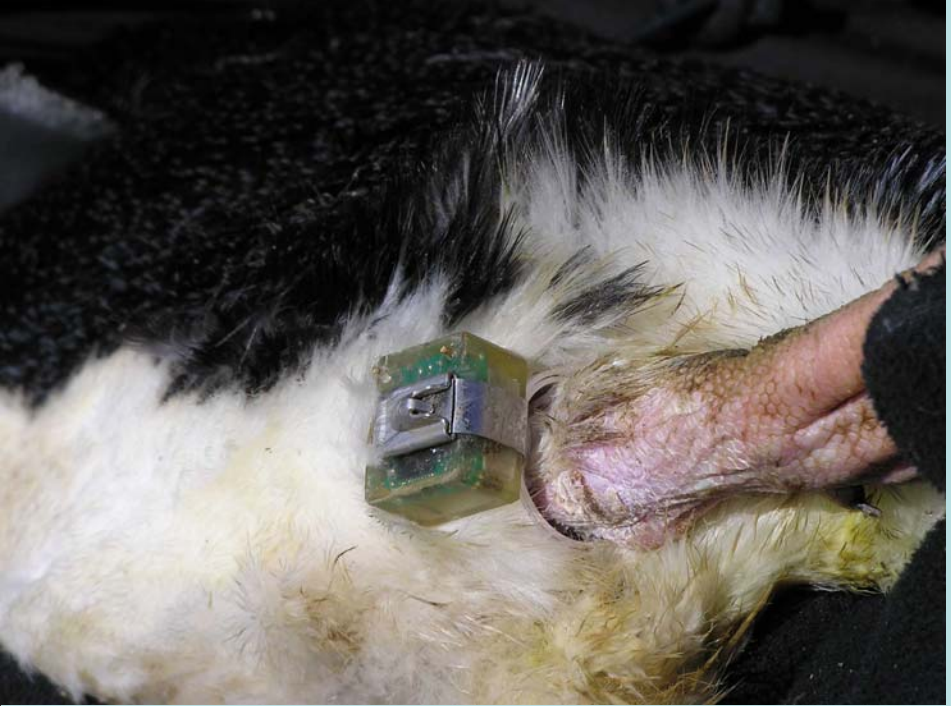


PENGUINCAM AT CAPE ROYDS, ROSS ISLAND





The PenguinCam at Cape Royds was deployed on November 18th 2006, set up by Ronald Ross with help from McMurdo Comm-Shop.

**THE REASON FOR DEPLOYING THE PENGUINCAM ?
TO RECORD NUMBERS OF PENGUINS MOLTING IN THE WEEKS
AFTER THE BREEDING SEASON WAS COMPLETED, AND WHEN
CAPE ROYDS IS NO LONGER ACCESSIBLE WITHIN THE LOGISTICAL
CAPABILITIES OF THE US ANTARCTIC PROGRAM.**

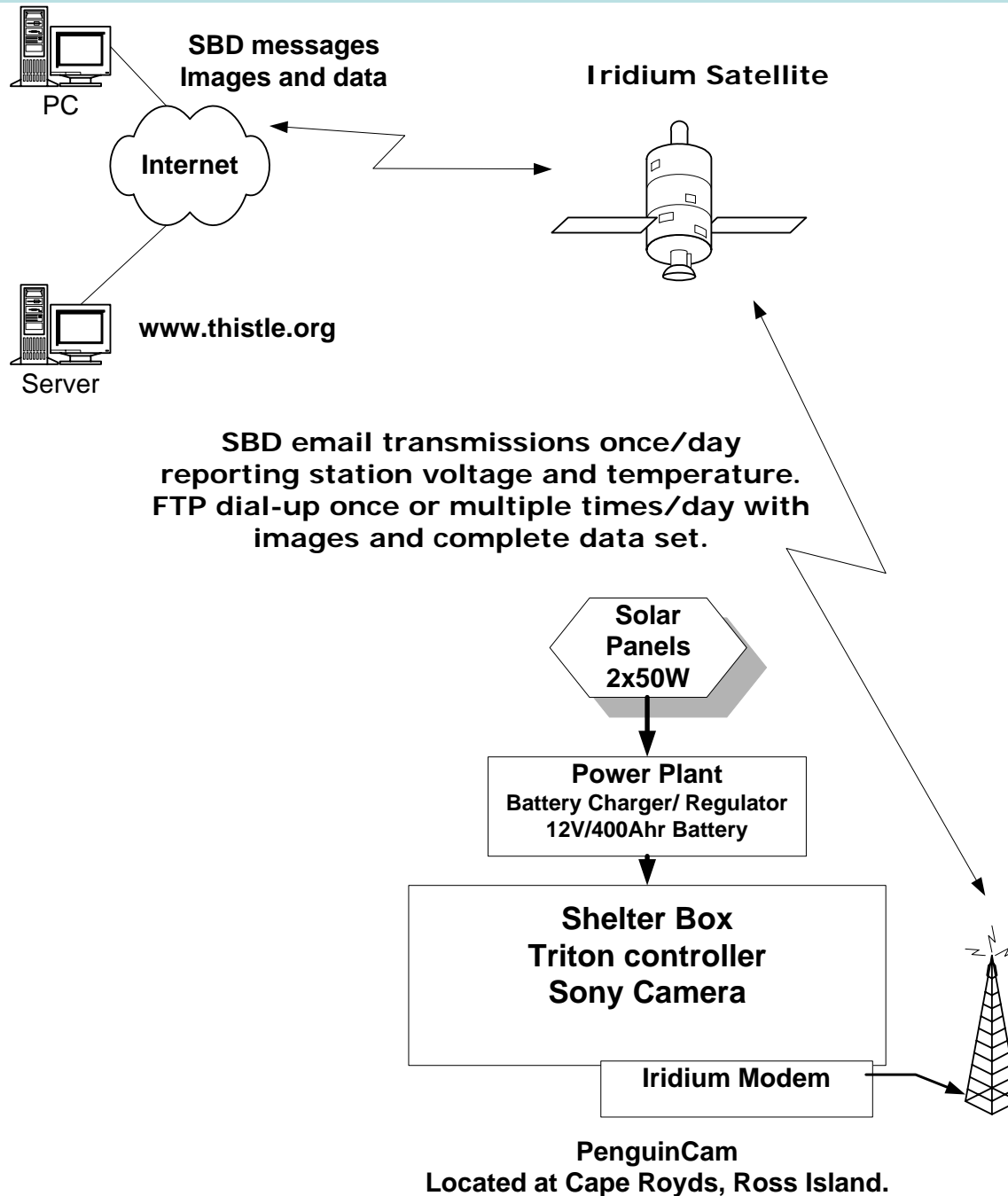
The station requirements were as follows.

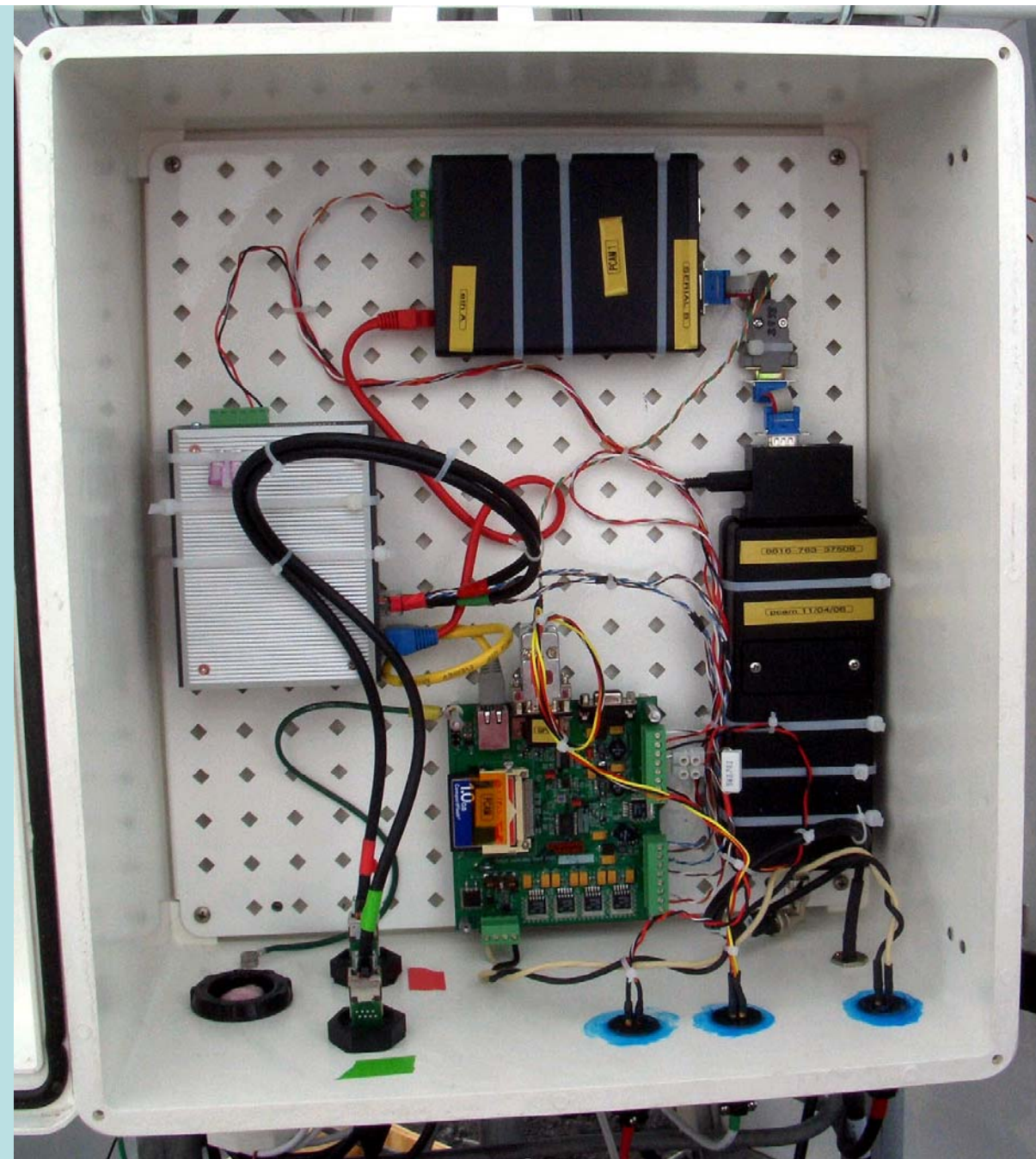
- **Solar powered.**
- **All year round operation.**
- **Wireless link to the Internet using Iridium SBD and dial-up modes.**
- **Color Camera with pan-tilt-zoom capabilities.**
- **On-board removable memory storage.**











Inside shelter box, showing clockwise from the top, dial up router, Iridium modem, Triton controller PCB and network hub

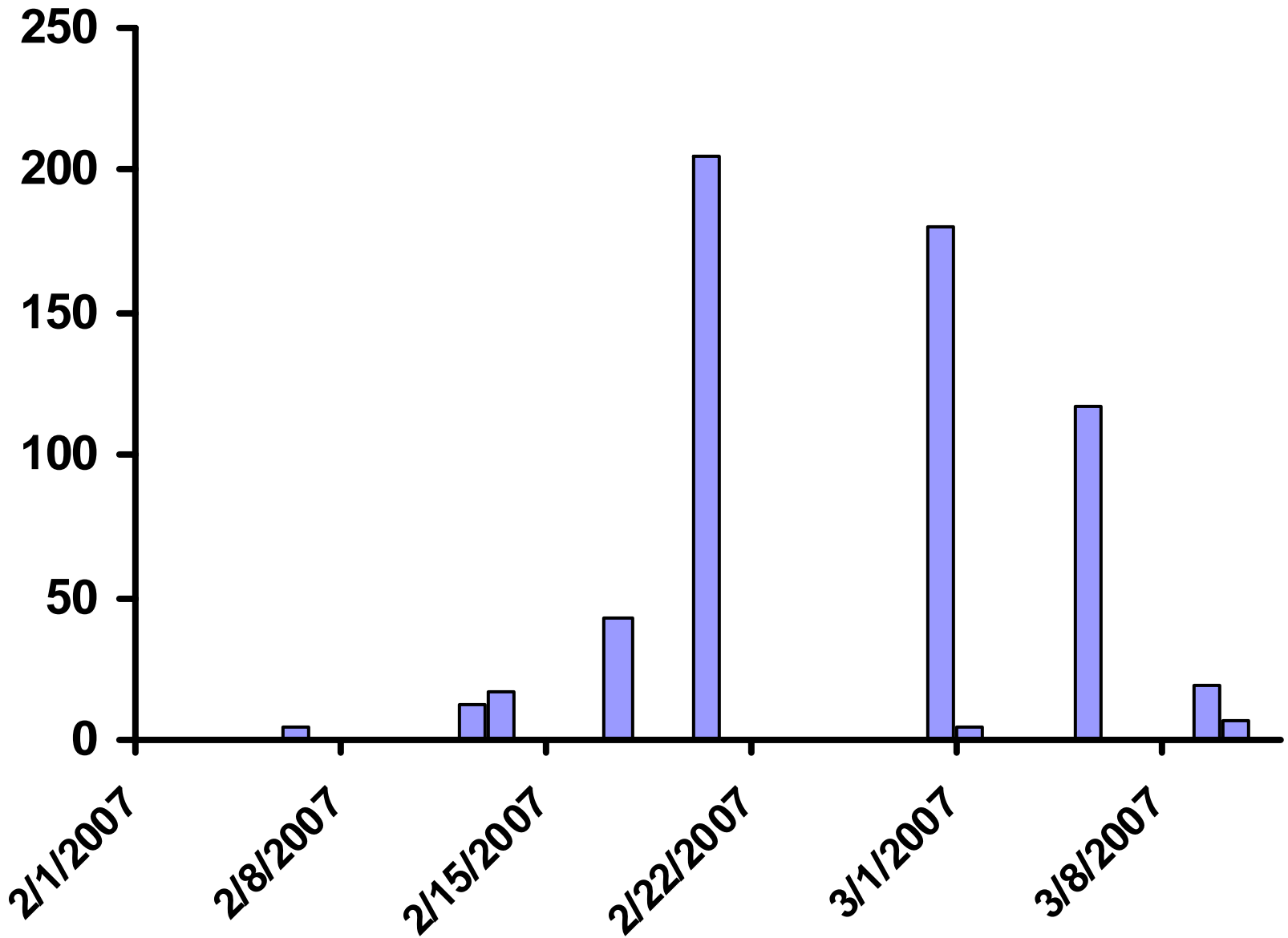








NUMBER PENGUINS



www.penguinscience.com

